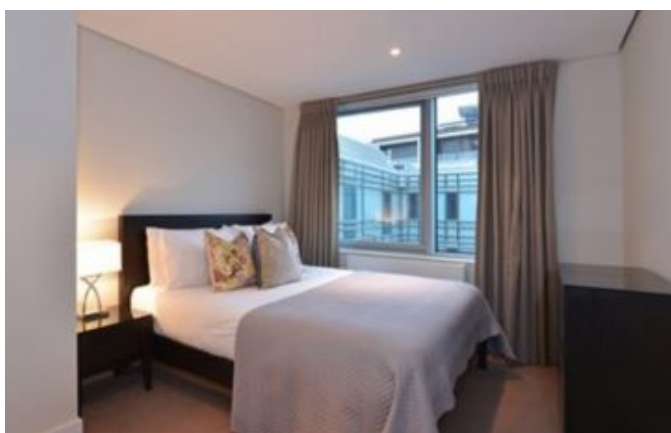




27 Porchester Road, Bayswater, London, W2 5DP  
| t: 020 7792 8888 | f: 020 7221 9773 | email@manoliahomes.co.uk |

## Lettings

### 2 Bedrooms, Merchant Square, London, W2



#### ENQUIRIES:

Lettings Department  
email@manoliahomes.co.uk

This apartment in this prestigious building offers superb views across London skyline. The spacious and bright apartment comprises a beautiful reception room with a new and modern fully fitted open plan kitchen, two spacious bedrooms, two bathrooms and ample storage space. The building itself features concierge, lift service, secure and free underground parking and round the clock security. The apartment offers easy access to superb transport links such as Paddington Train Station (Bakerloo, Hammersmith & City, Circle, District lines and Heathrow express) Edgware Road (Circle, District and Bakerloo lines).

#### Details:

Bedrooms:2  
Bathrooms:2  
Ensuites:1  
Receptions:1  
Kitchens:1  
Floor area:721

Price: £795 pw



Manolia Homes Property Services Limited | www.manoliahomes.co.uk  
Registered by The Registrar of Companies for England and Wales. No. 6473623