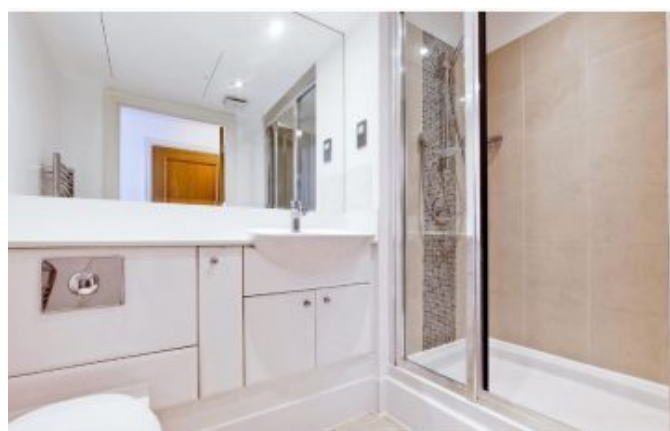


Sales

3 Bedrooms, W2



Manolia Homes are pleased to offer for rental, this beautifully decorated three bedroom apartment located in the popular Sheldon Square development. The apartment is located 6th floor (with a lift) and concierge. It comprises of three double bedrooms, two bathrooms (one en-suite), modern kitchen, spacious reception room and private balcony/terrace. Property further benefits from side water views, wooden floors, air conditioning and underground parking. Transport links include Paddington station (Circle and Hammersmith & city lines) and an excellent direct train line to Heathrow airport from Paddington rail station. There are a variety of nice shops and good eats around the area and Edgware Road is also within walking distance.

ENQUIRIES:

Sales Department
email@manoliahomes.co.uk

Details:

Bedrooms:3
Bathrooms:2
Ensuites:1
Receptions:1
Kitchens:1
Floor area:846.68

Price: £1,100,000