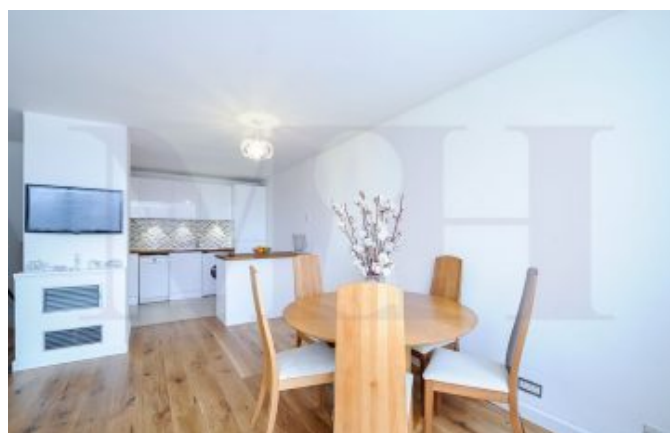


## Lettings

### 2 Bedrooms, Craven Hill Gardens, W2



Manolia Homes are pleased to present this large two double bedroom flat situated on the third floor, with an accessible lift. The property offers modern furnishings and a fully fitted kitchen with large dining area and access to a lovely communal garden. Both bedrooms offer plenty of storage space and the master bedroom leads to a private balcony. The building is located within a 100m of Hyde Park and walking distance to Lancaster Gate underground station.

#### Details:

Bedrooms:2  
Bathrooms:1  
Kitchens:1

#### ENQUIRIES:

Lettings Department  
email@manoliahomes.co.uk

## Price: £505 pw