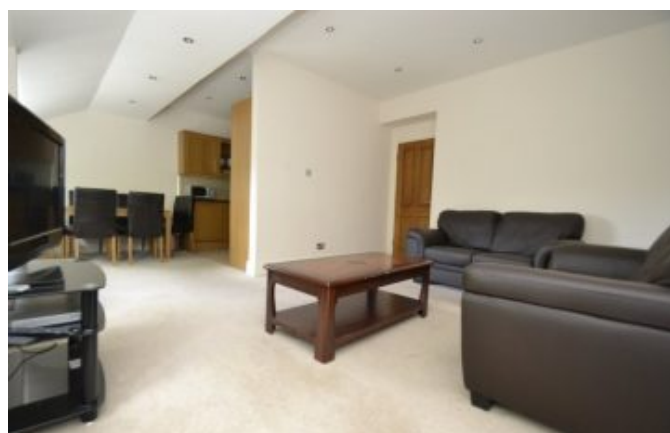


Lettings

2 Bedrooms, Westbourne Terrace, London, W2



A bright and spacious two bedroom flat located in the heart of Paddington, with easy access to transport links, Hyde Park, Little Venice, Queensway, Bayswater and local shops and amenities of the area. The apartment comprises of an open plan kitchen and reception room, two double bedrooms, two bathrooms and a separate WC. The property benefits from plenty of natural light, neutral coloured walls and new carpets throughout. Available Now! Read more at <http://www.zoopla.co.uk/to-rent/details/41755191#57gZbo1c7M1JjYA.99>

ENQUIRIES:

Lettings Department
email@manoliahomes.co.uk

Details:

Bedrooms:2
Bathrooms:2
Ensuites:2
Receptions:1
Kitchens:1
Floor area:810

Price: £2,400 pcm